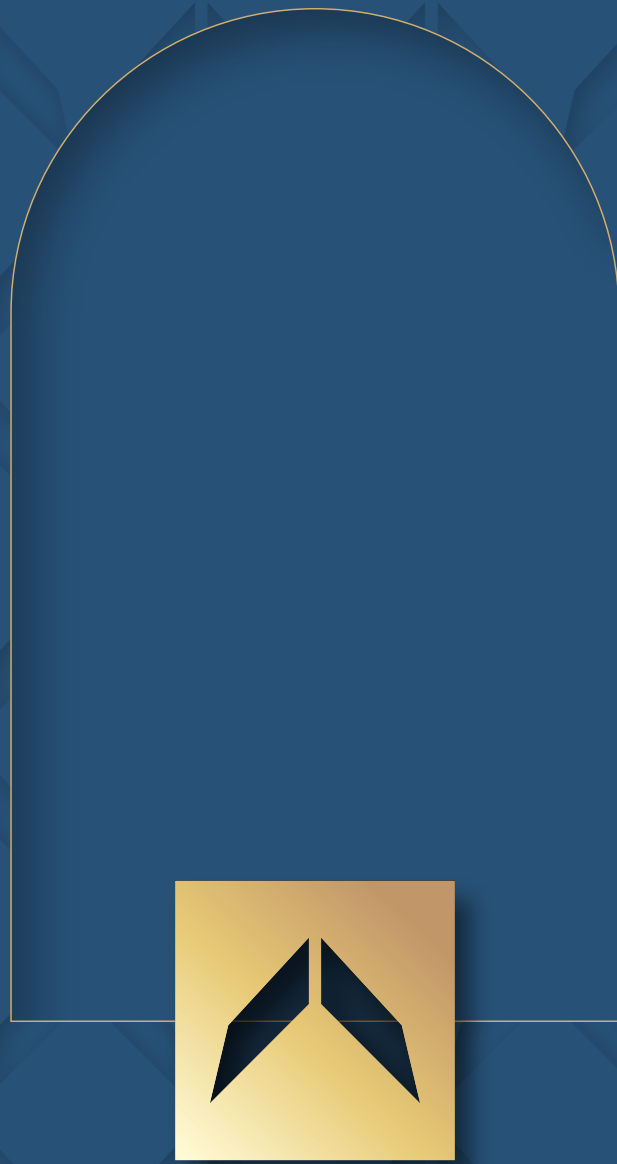




**BELONG TO THE
EXTRAORDINARY**



AKALPYA
4 BHK HIGH LIFE

INTRODUCING WAPA'S MOST DISTINGUISHED ADDRESS

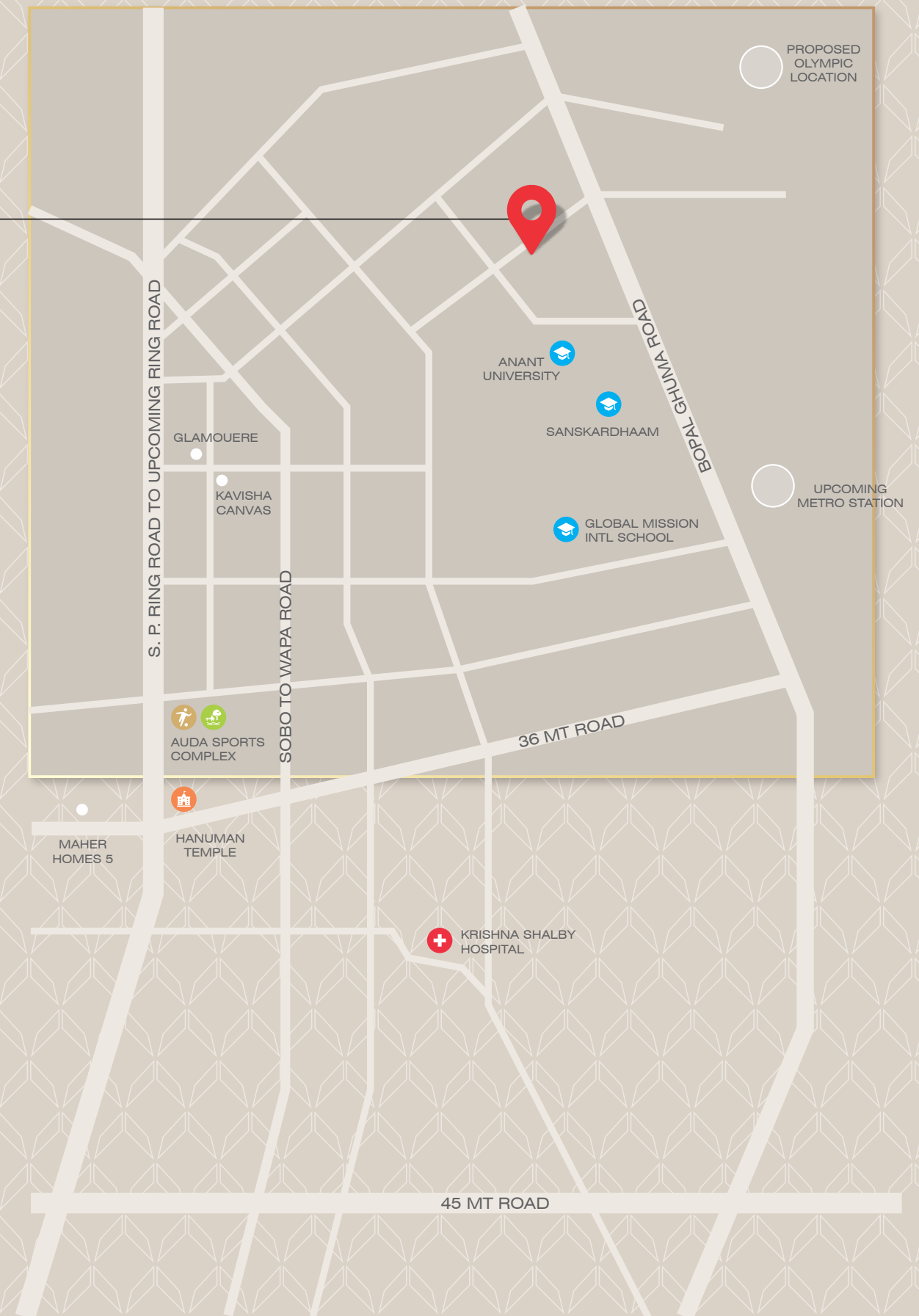
West Ahmedabad Premium Area (WAPA), this neighborhood represents the absolute pinnacle of the city's modern urban evolution. It is a meticulously planned sanctuary that surrounds you with premium global infrastructure while keeping you intimately connected to Ahmedabad's dynamic core.

Perfectly positioned in the highly sought-after enclave of WAPA, your new home keeps you intimately connected to the vibrant heartbeat of Ahmedabad while offering a serene retreat from it. Enjoy seamless, effortless access to the city's finest educational institutions, premium healthcare facilities, upscale retail destinations, and major business hubs.

Living in WAPA means embracing a lifestyle where ultimate convenience meets unmatched prestige, placing the very best of Ahmedabad right at your doorstep.



wapa WEST AHMEDABAD
PREMIUM ARENA



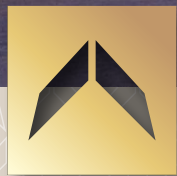


THE PRIVILEGE FOR THE DISTINGUISHED 76.

True luxury is ultimately synonymous with exclusivity. Comprising a limited edition of just 76 bespoke residences, this project is a private haven reserved for a discerning elite. This ultra-low-density living ensures maximum privacy, expansive personal spaces, and a quiet, close-knit community of like-minded individuals. Here, you are not just acquiring a magnificent home; you are securing your legacy in one of the city's most coveted and private addresses.







Your arrival is a curated experience designed to inspire awe from the very first moment. Drive through the majestic entry gates and glide into a sweeping, hotel-style drop-off zone that whispers elegance. As you step through the doors into the double-height grand lobby, you are enveloped in premium aesthetics and greeted by a dedicated concierge. You leave the chaos of the city behind the moment you cross the threshold. This is more than an entrance; it is a warm, opulent welcome home.



ENTRANCE FOYER

AN ELEGANT URBAN RETREAT

Step into a meticulously curated environment where nature and architecture exist in perfect harmony. Our expansive, manicured landscapes are designed to serve as your private retreat from the urban rush. Wander through verdant, artfully designed green spaces that soothe the senses and invite quiet reflection.





LAWN AREA



TERRACE SITOUT



LANDSCAPE SITOUT

AN OASIS OF SERENITY & CALM

Tucked within this lush sanctuary, you will discover tranquil sit-outs and shaded pavilions—perfect for a peaceful morning coffee or a relaxing evening under the canopy. Every element of the outdoors has been thoughtfully crafted to offer you a daily breath of fresh air and an unparalleled sense of calm.



SITE PLAN

AMENITIES

- | | |
|----|-------------------------|
| 1 | CHILDREN DROP OFF AREA |
| 2 | SWIMMING POOL WITH DECK |
| 3 | GYMNASIUM |
| 4 | CHILDREN PLAY AREA |
| 5 | TERRACE DECK |
| 6 | EVENT LAWN |
| 7 | INDOOR GAMES AREA |
| 8 | BANQUET HALL |
| 9 | SIT OUT |
| 10 | MULTIPURPOSE COURT |



CURATED EXPERIENCES FOR A LIFE WELL-LIVED

Indulge in a suite of world-class amenities designed to cater to your every mood, wellness goal, and social desire. Host unforgettable celebrations and elegant gatherings in the lavishly appointed banquet hall, or push your limits in the state-of-the-art gymnasium, fully equipped with cutting-edge fitness technology.

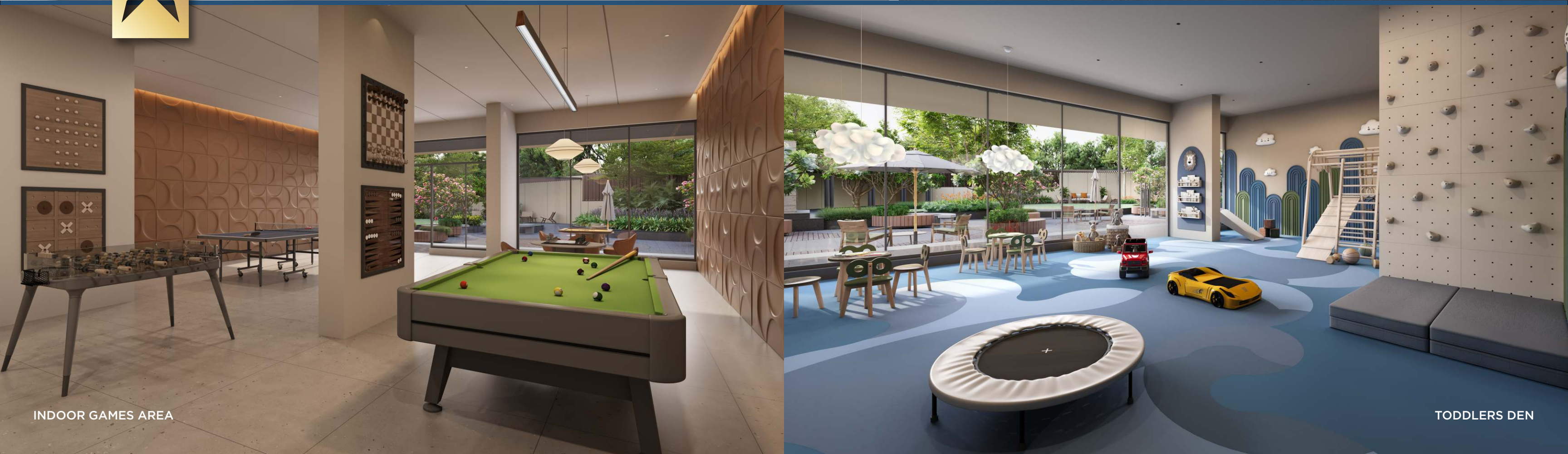
While you unwind, the little ones can safely explore and unleash their imagination in the vibrant children's play area.

For moments of leisurely bonding, the indoor games lounge provides the perfect setting for friendly competition with family and neighbors.





GYMNASIUM



INDOOR GAMES AREA

TODDLERS DEN



TYPICAL FLOOR PLAN

1, 3, 9, 11, 13,
15 & 17th Floor

(Terraces only on first floor)



TYPICAL FLOOR PLAN

2, 4, 6, 8, 10,
12 & 14th Floor





A CANVAS OF LIGHT AND BOUNDLESS SPACE

Step inside to experience a masterclass in spatial design, where every square foot is optimized for a grand, unconfined lifestyle.

Our expansive 4BHK layouts feature seamless, open-plan living areas that effortlessly flow into generous private decks, beautifully blurring the lines between the indoors and outdoors.

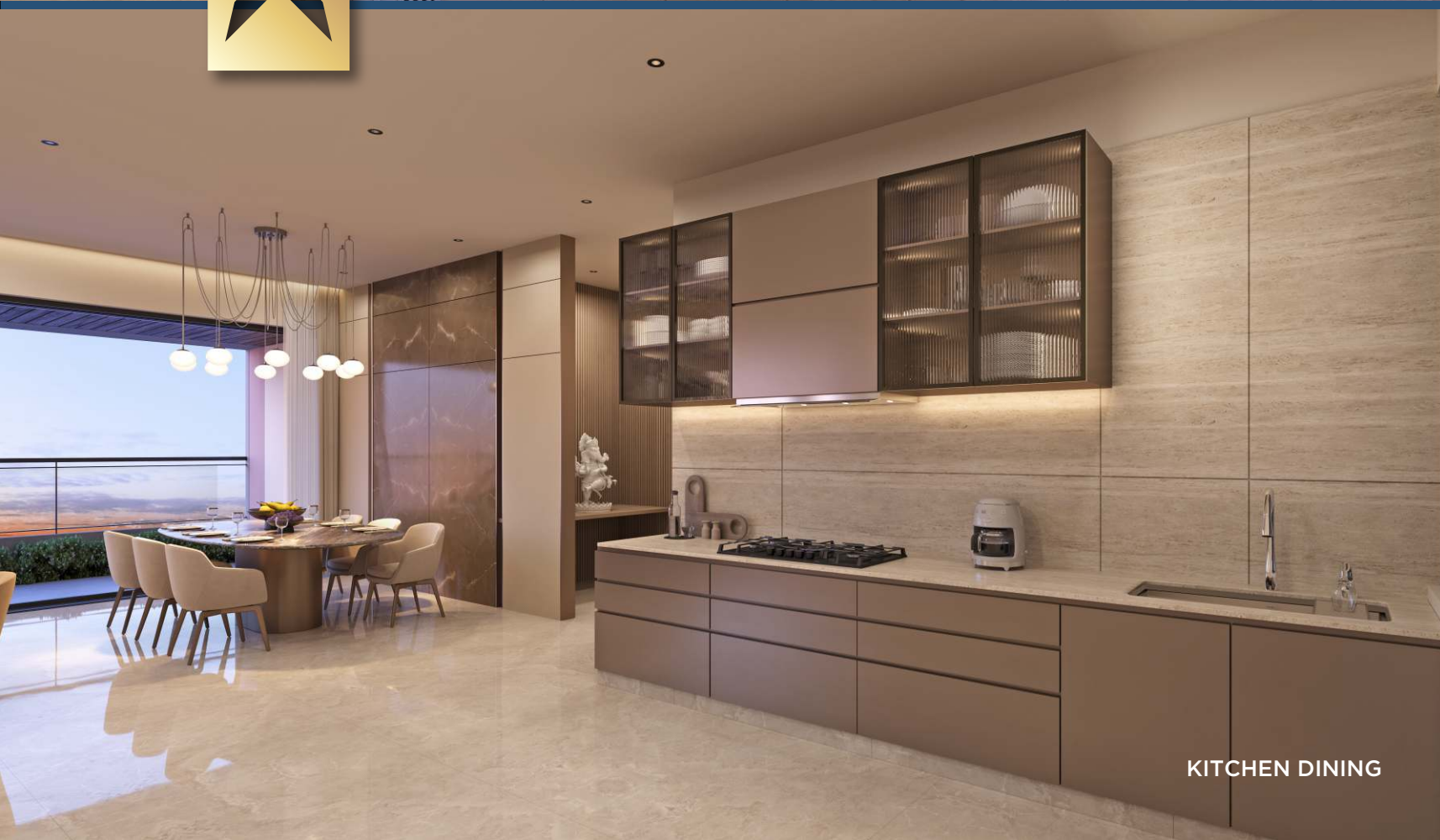
Towering floor-to-ceiling windows bathe the interiors in abundant natural light while ensuring optimal cross-ventilation, keeping your home fresh and vibrant from sunrise to sunset. Here, the architecture doesn't just enclose space; it breathes, elevating your everyday routine into an airy, sunlit retreat.



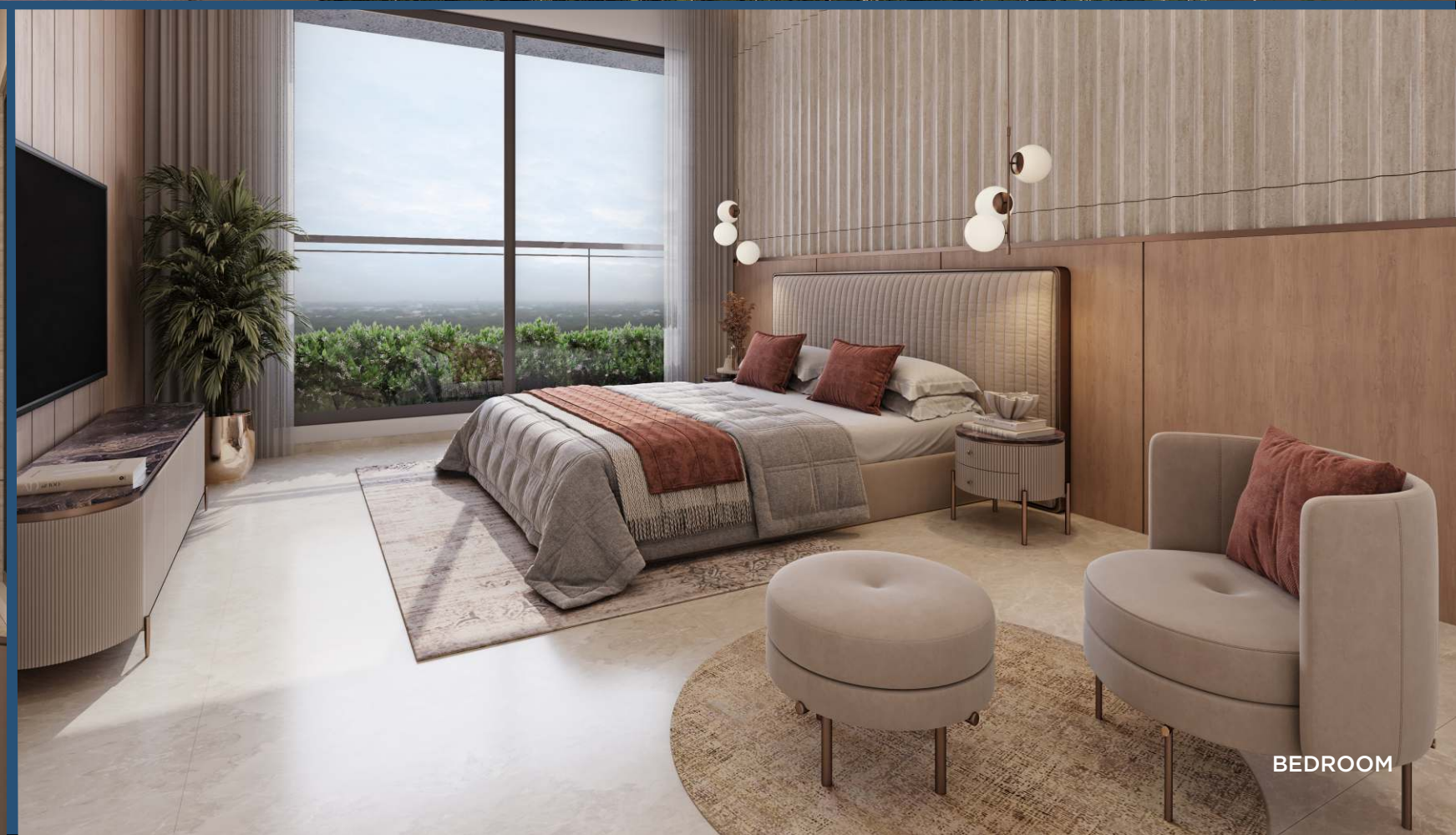




BALCONY



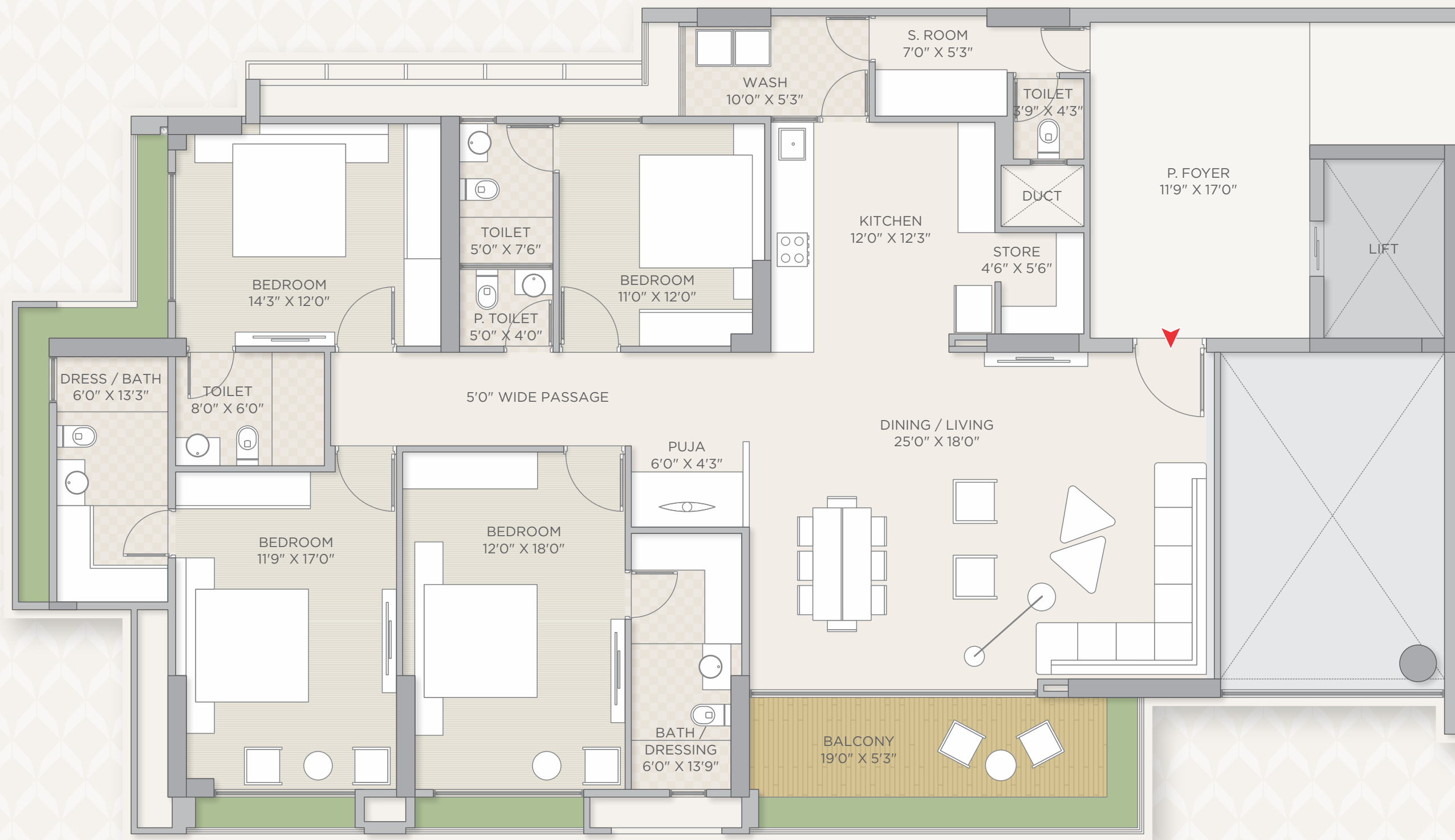
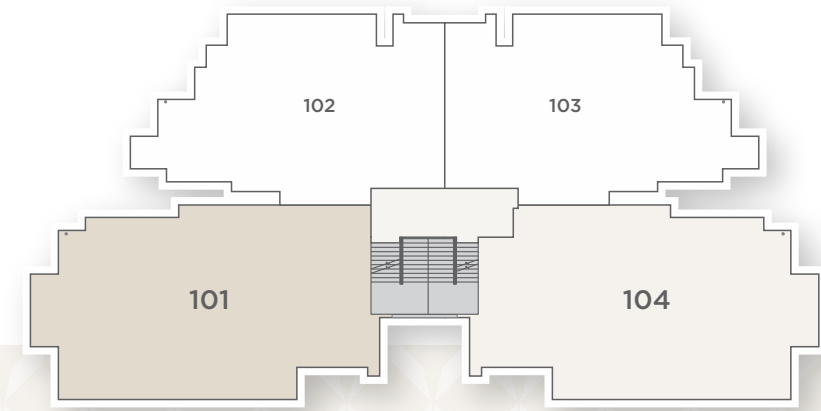
KITCHEN DINING



BEDROOM

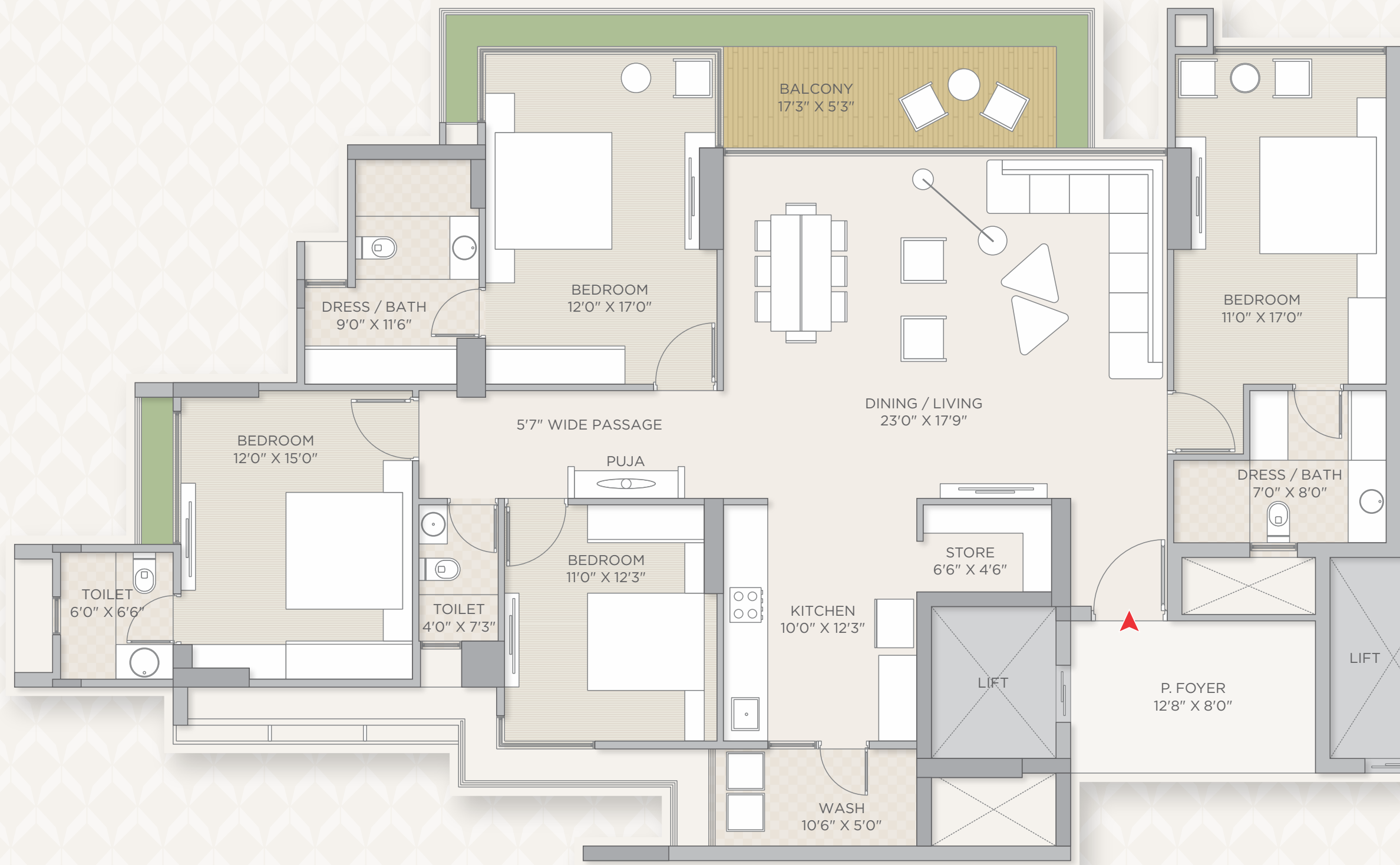
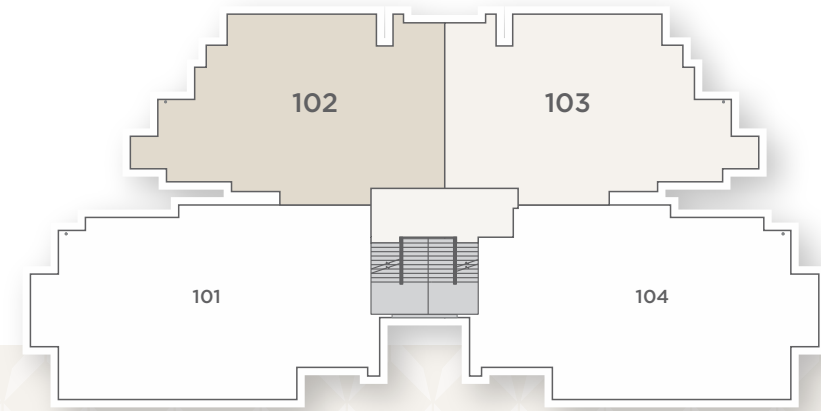
UNIT FLOOR PLAN

UNIT : 101 & 104
2, 4, 6, 8, 10, 12 & 14th Floor



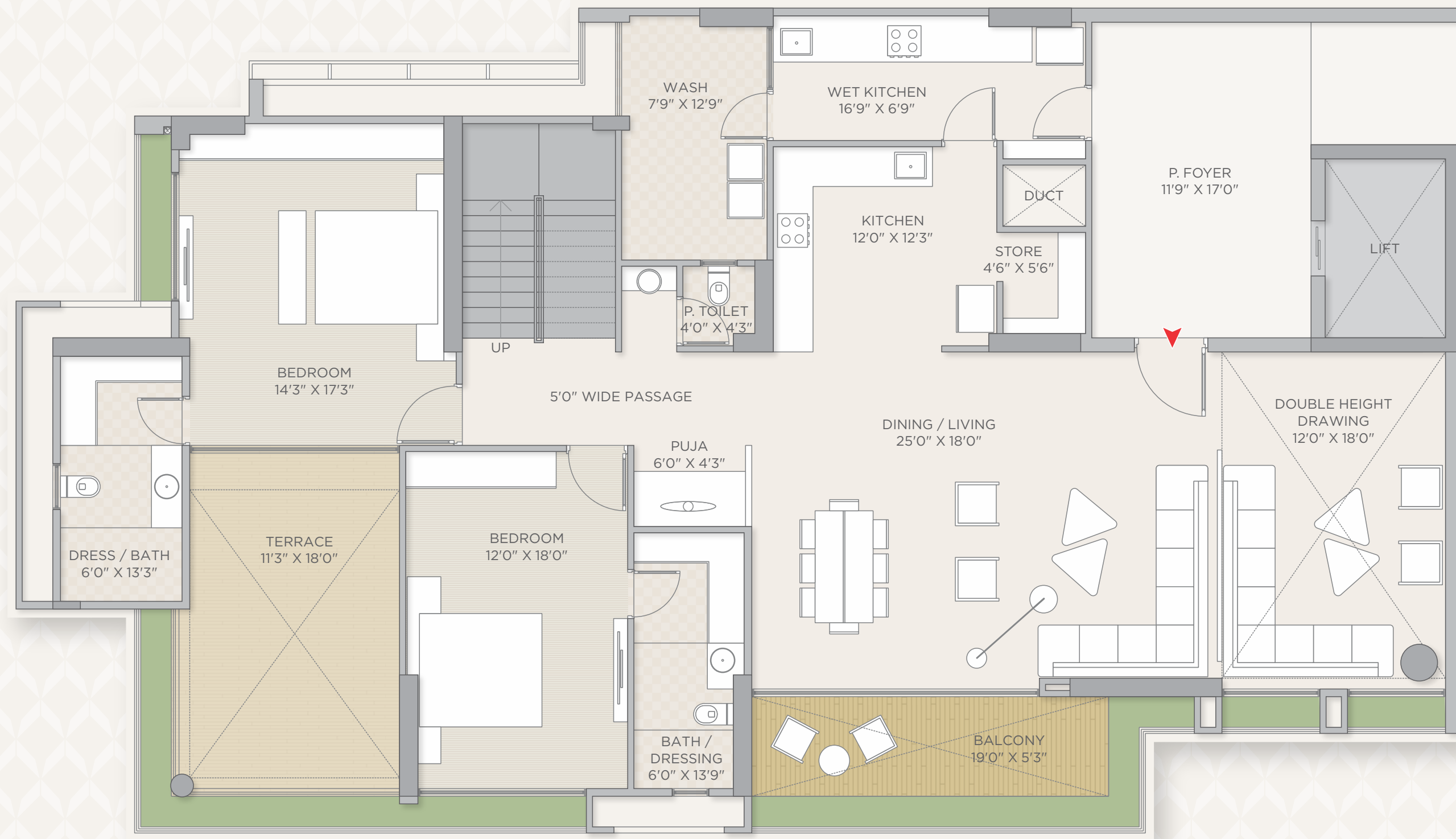
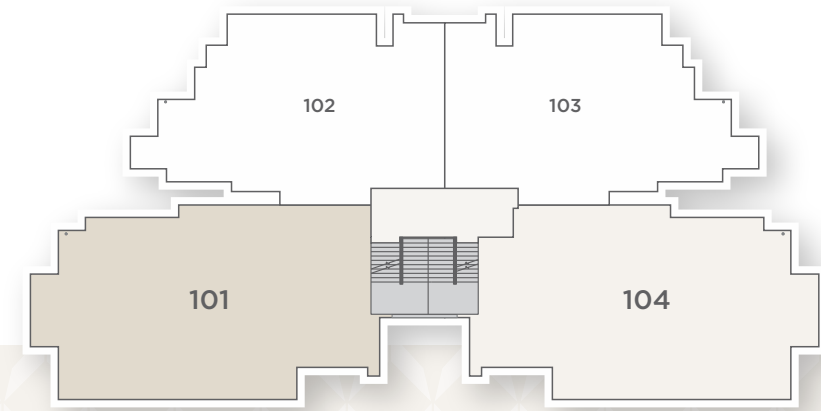
UNIT FLOOR PLAN

UNIT 102 & 103
All Floors



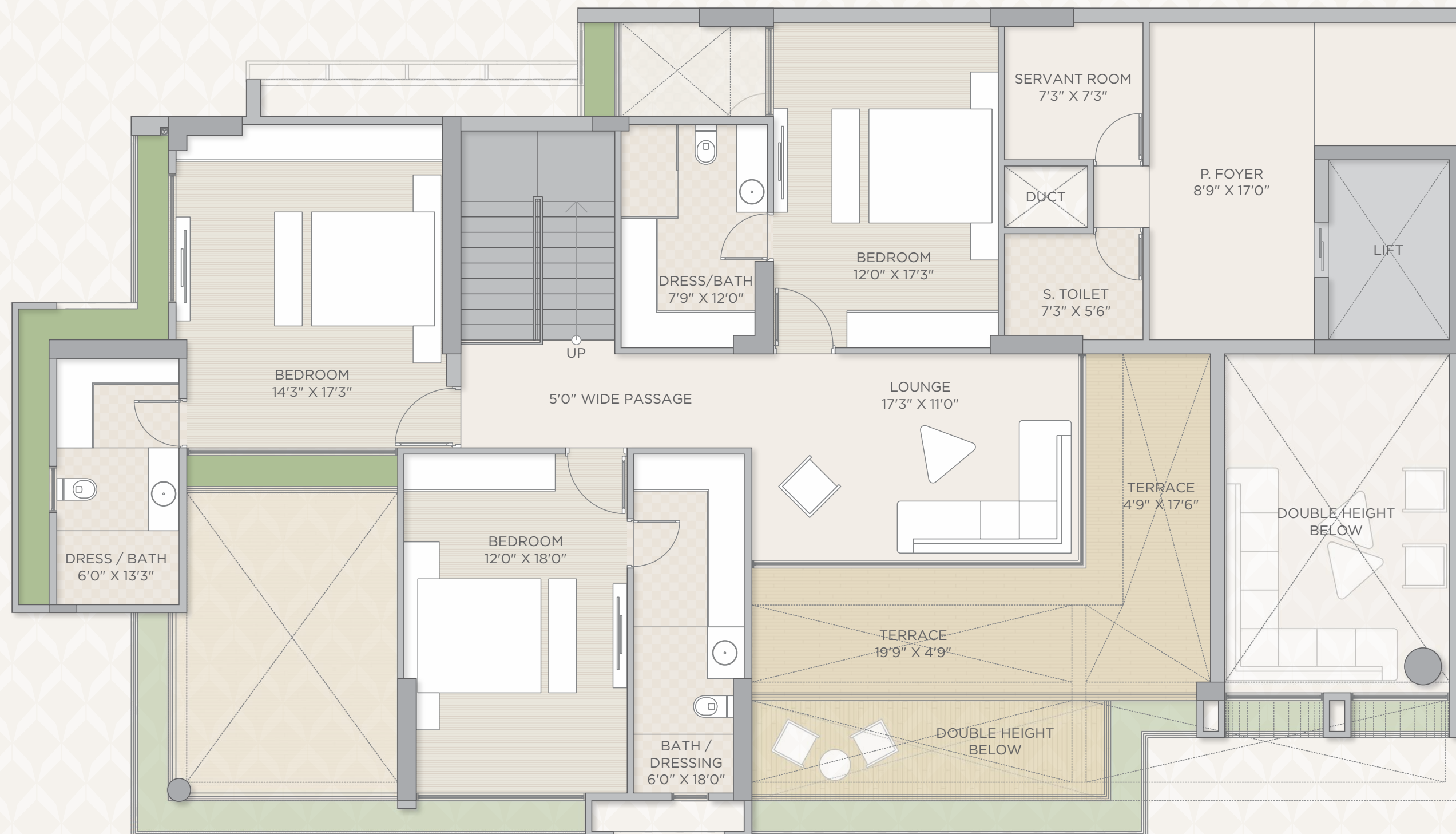
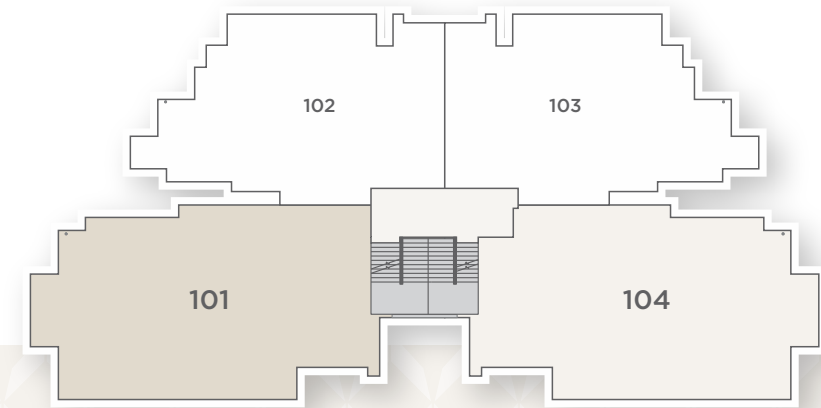
PENTHOUSE LOWER FLOOR PLAN

UNIT 101 & 104
19th Floor



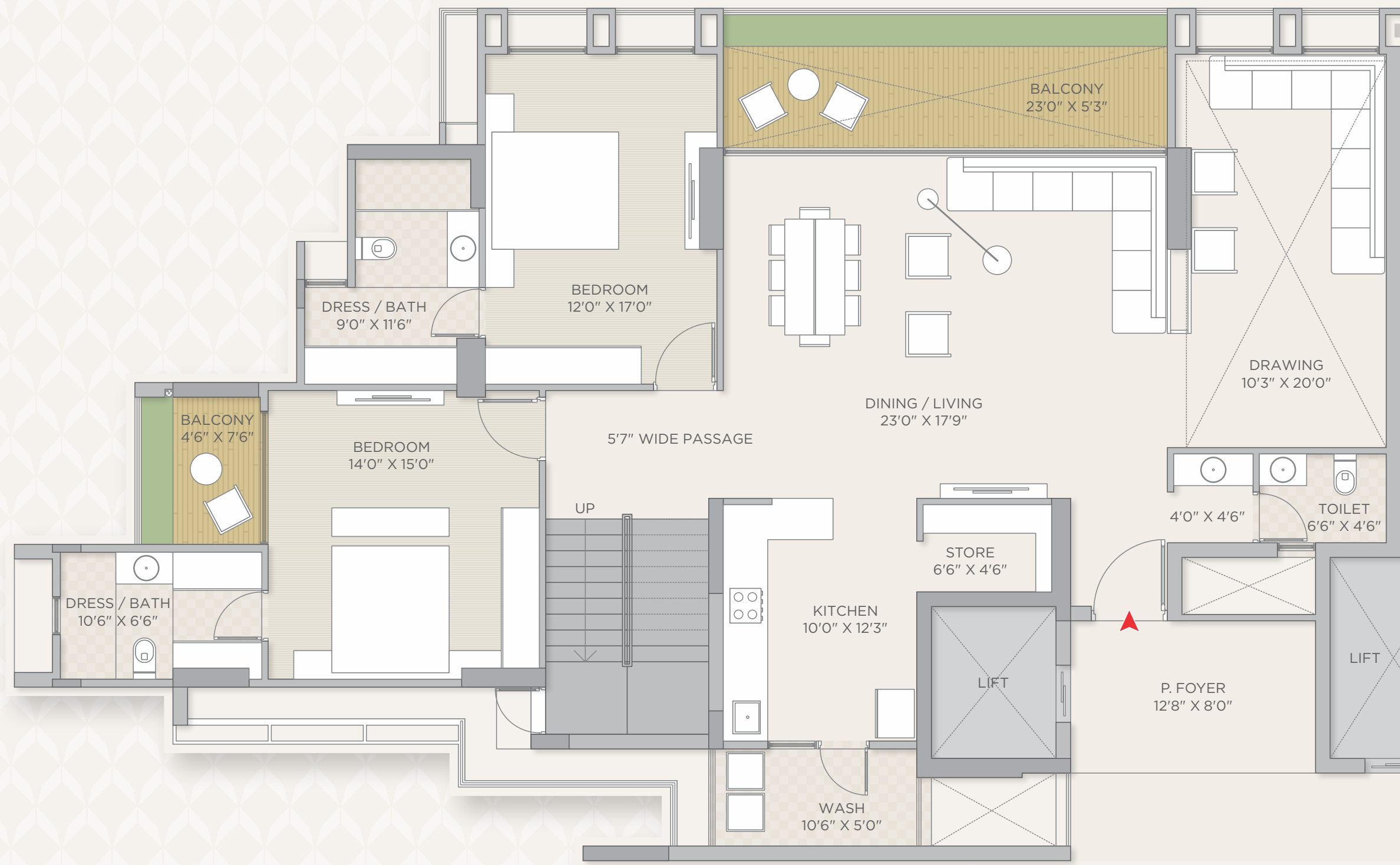
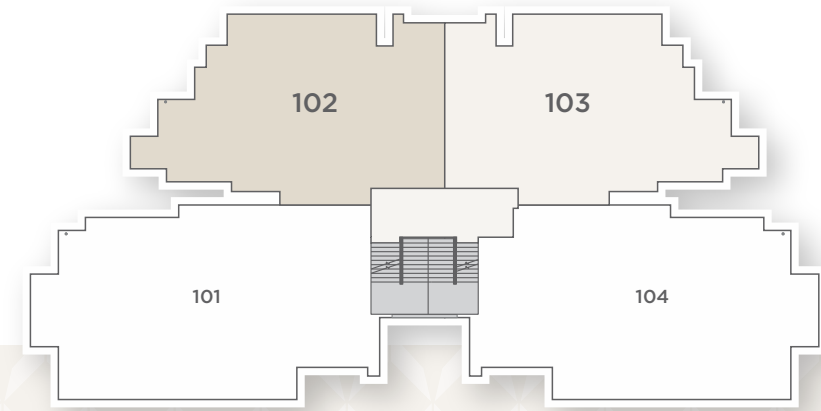
PENTHOUSE UPPER FLOOR PLAN

UNIT 101 & 104
20th Floor



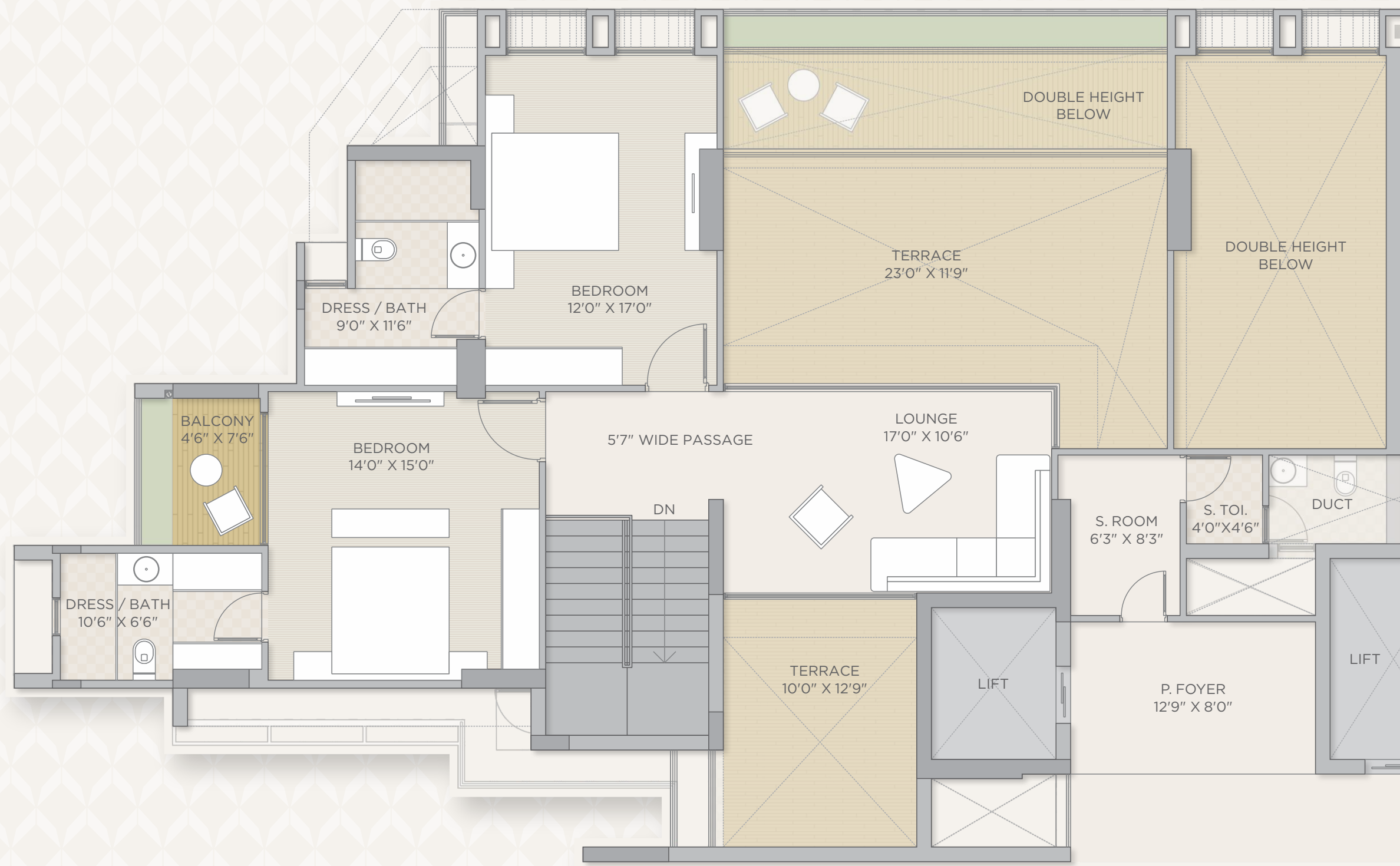
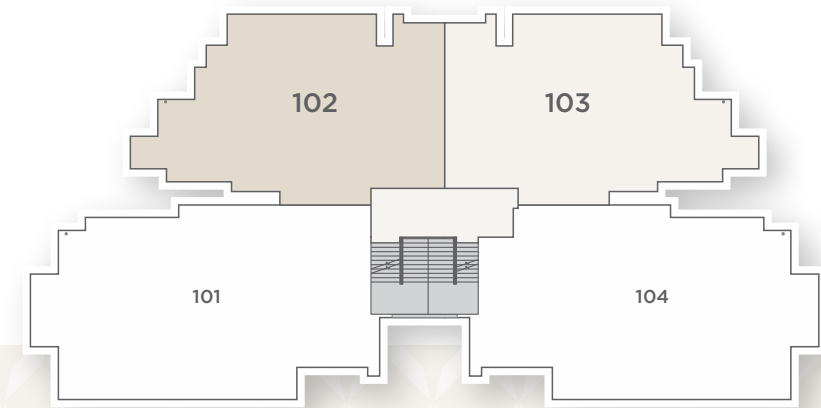
PENTHOUSE UPPER FLOOR PLAN

UNIT 102 & 103
19th Floor



PENTHOUSE UPPER FLOOR PLAN

UNIT 102 & 103
20th Floor



SPECIFICATIONS

STRUCTURE

- Quality Control Led, Earthquake resistant, RCC frame structure
- Double Basement Parking Facility
- Professionally water-proofed terrace

WALL FINISH

- Double coat Mala Plaster with Textured Finish (External)
- Wall Cement Plaster / Putty finish (Internal)

DOORS

- Main Door - Wooden frame with both side polished door equipped with digital video door phone & quality lock sets
- Internal Doors - Flush doors finished color with quality hardware

WINDOWS

- Windows-High quality semi-slim series Aluminum section with powder coating
- All windows till beam bottom height
- Granite Jambs for all windows

LIVING ROOM

- Glazed vitrified tile (Matt Finish) 1200 x 1800mm in drawing / dining and passage area
- Glazed vitrified tile (Matt Finish) 1200 x 1800mm in balcony

BEDROOMS

- Glazed vitrified tile (Matt Finish) 1200 x 1800mm in all Bedrooms

KITCHEN

- Glazed vitrified tile (Matt Finish) 1200 x 1800mm in Kitchen and Store
- Kitchen Platform 15mm thickness full body slab (3000 x 700mm) and dedo 600 x 1200mm vitrified tile
- Premium Stainless-Steel sink
- D-Gold polished granite shelf in store
- Wash Area full body vitrified 600 x 600mm in wall and dedo

BATHROOMS

- Matt Finish 600 x 1200mm flooring
- Kohler / Toto C.P and Sanitary fittings of premium quality
- Wall Hung WC

COMMON FOYER

- Anti-Skid 600 x 600mm full body vitrified tile
- D-Gold granite for staircase tread and riser

ELECTRICAL

- Concealed Conduits with copper wires (Finolex or equivalent)
- Sufficient points of power and lighting
- All sockets with protective MCB
- Premium quality modular switches (Norisys or equivalent)
- DTH cable points for Drawing and Master bedroom
- Personal lift

CONSULTANTS

ARCHITECT

LANDSCAPE ARCHITECT

PMC

STRUCTURAL CONSULTANT

MEP CONSULTANTS

TERMS & CONDITIONS:

- All the architectural and interior images in the brochure are merely simulated interpretations using computer graphics to enhance the customer understanding and are not factual images.
- The color and general appearance of the flooring and wall tiles, sanitary ware & fitting walls, ceilings, windows, doors, internal roads, trees, shrubbery etc. shown in the simulated computer graphics images are taken from the object libraries for the purpose of presentation and the prospective buyers of the concerned property are advised to refer to the constructor specifications.
- Additional amenities and utilities not mentioned or shown in the brochure but may be required as per the law should be deemed to be forming part of the project by the purchaser.
- All Furniture including wardrobes, other sofa furnishings inter-alia curtains, mattresses, bed, linen, upholstery etc. lights and other electrical fixtures and appliances like air conditioners, refrigerators, TVs, telephones, laptops etc., any of the equipment household accessories inter-alia crockery and cutlery, rugs, carpets, decorative pieces and wall hangings, wall papers, utensils etc. apparels and all other consumable and movable items shown in the simulated images do not form part of the sale of any property by the developer.
- All rights reserved with the developers to make any changes in the project as deemed necessary and all the members shall abide by such changes. GST, Stamp duty, registration charges, or any other charges and taxes as & when levied by government or any of its body shall be borne by purchaser / buyer / legal possession holder.
- This brochure is not to be treated as part of the legal document and is for an easy display of the project.
- The Brochure is for restricted private circulation only and is not to be considered as a legal document with obligations for specific performance. It is meant for the purpose of conceptual presentation only.
- Subject to Ahmedabad Jurisdiction only.

RAA16687





<https://gujrera.gujarat.gov.in>



FOR PLANS AND MORE INFORMATION CALL

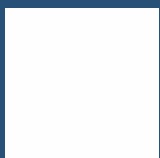
 +91 72010 09191

 **Corporate House :**
Zaveri Corporate House
Opp. Capital One
Ahmedabad - 380058

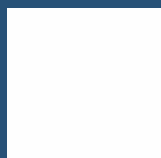
 info@zaverirealty.com
 www.zaverirealty.com

 **Site Address :**
Akalpya, Wapa,
Ahmedabad

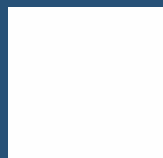
<https://gujrera.gujarat.gov.in> | RERA Registration Number :
PR/GJ/AHMEDABAD/SANAND/Ahmedabad Urban Development Authority/RAA16687/090426/311231



Scan to view
WALKTHROUGH



Scan to view
e-BROCHURE



Scan to view
LOCATION