

SHILP-ZAVERI

CREATE WORK INSPIRE

Welcome to the new era of business spaces.

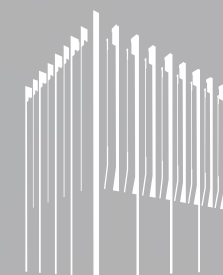
A location that CREATE businesses. A location that needs no directions, a location that becomes the address.

Spaces that WORK for your business. Design and detailing that enhances your work flow. Spaces that maximizes productivity and time.

Spaces that INSPIRE. Inspire to achieve, to grow to innovate!

OFF SHYAMAL CROSS ROADS

A LOCATION THAT HAS OPTIMUM ACCESSIBILITY
TO BUSINESS HUBS, AIRPORT, INDUSTRIAL DISTRICTS
& MAJOR HIGHWAYS



SHILP-ZAVERI

DREAM INNOVATE SUCCEED

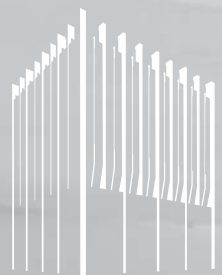
A Building that not only personifies innovation but also nurtures it. No longer spaces are independent of the people that will inhabit them. Spaces now are defined by the people who will occupy in them. The architecture and design we have created inspires innovation, creativity and hassle free work culture.

LARGE FLOOR PLATES FOR CONVENIENT PLANNING

MULTI LEVEL PARKING

PLUSH FINISHES IN ENTRANCES AND FOYER

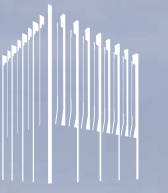
GLASS FACADE FOR OPTIMUM VISIBILITY AND LIGHT



SHILP-ZAVERI



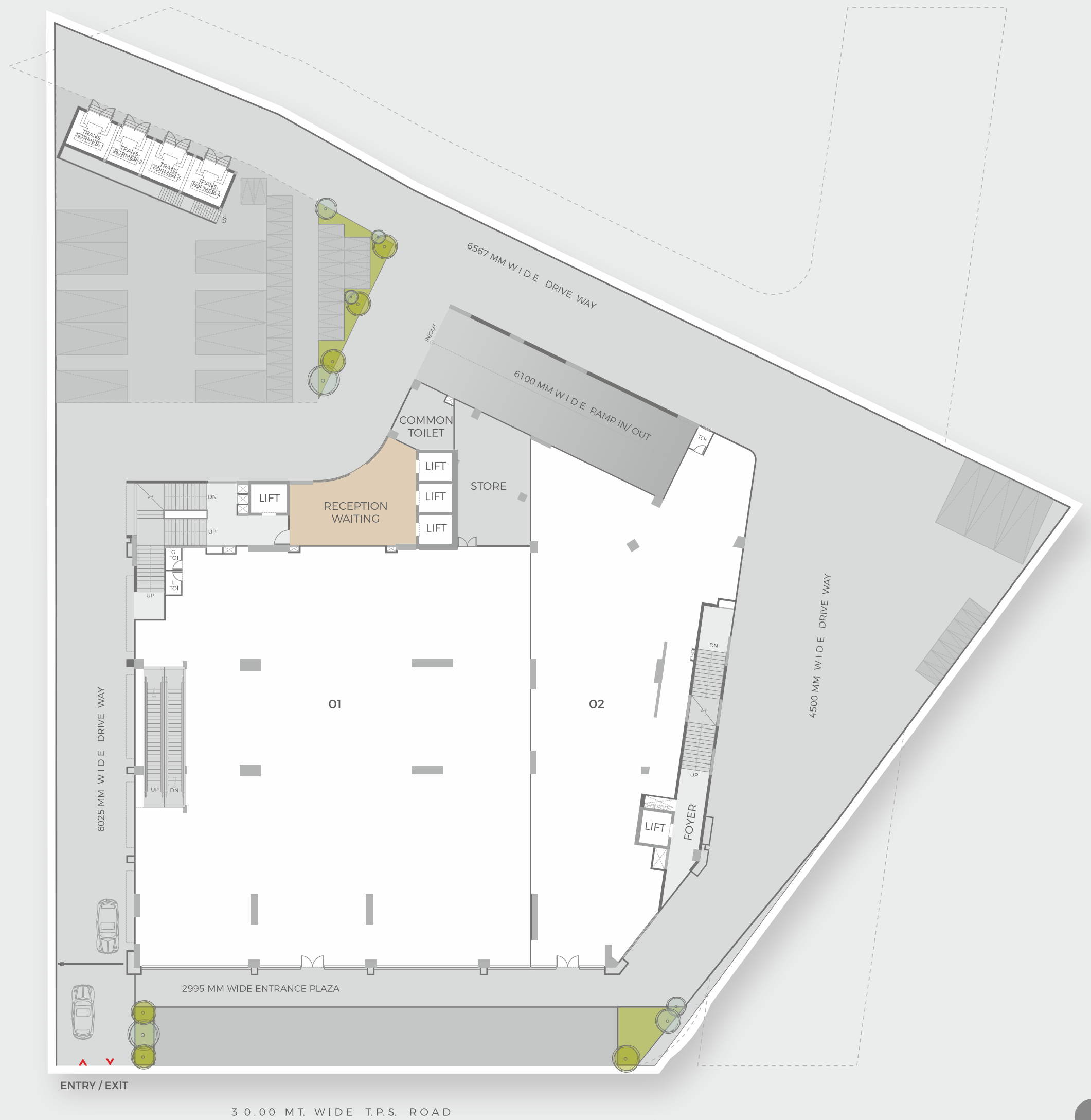




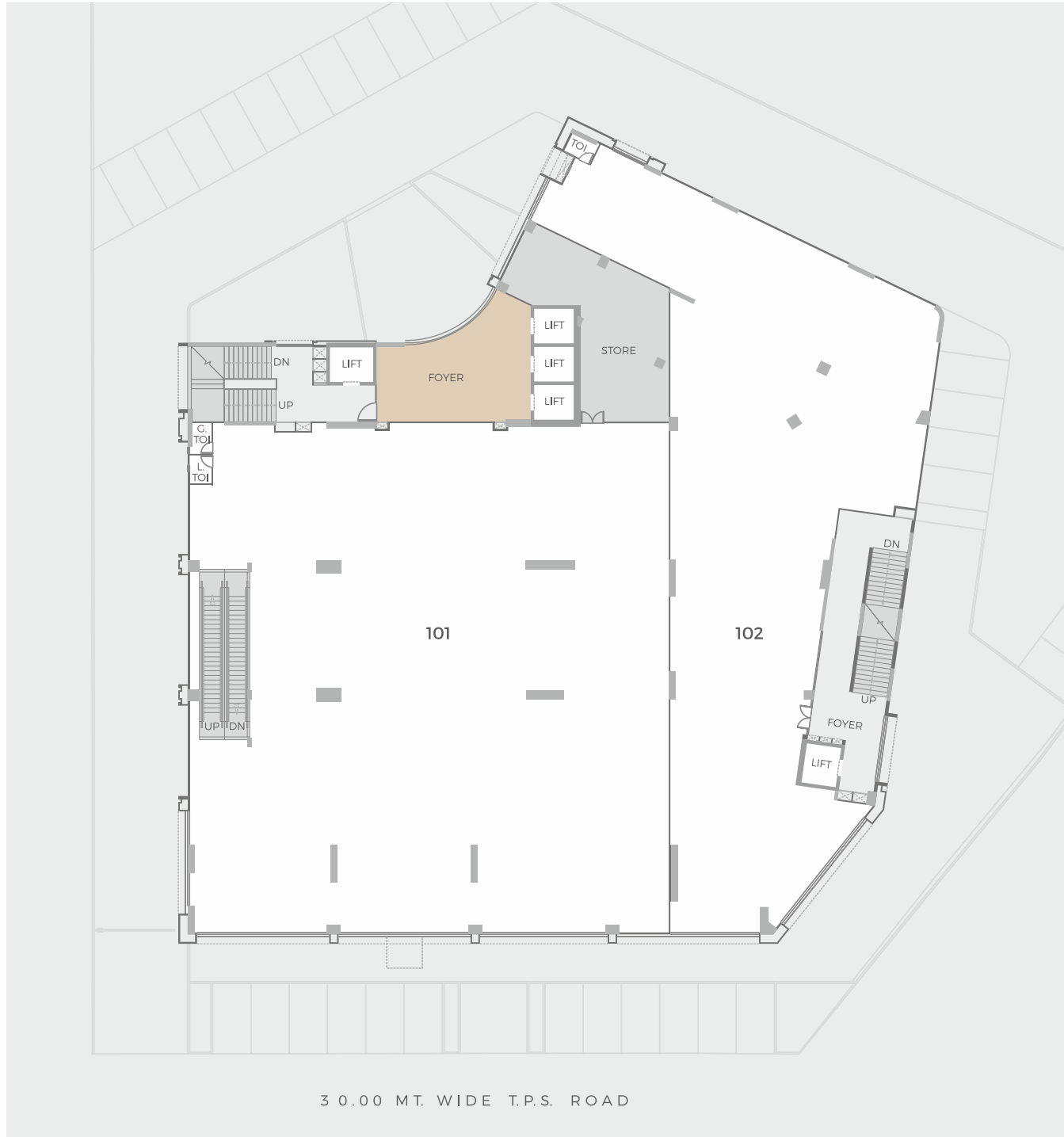
SHILP-ZAVERI



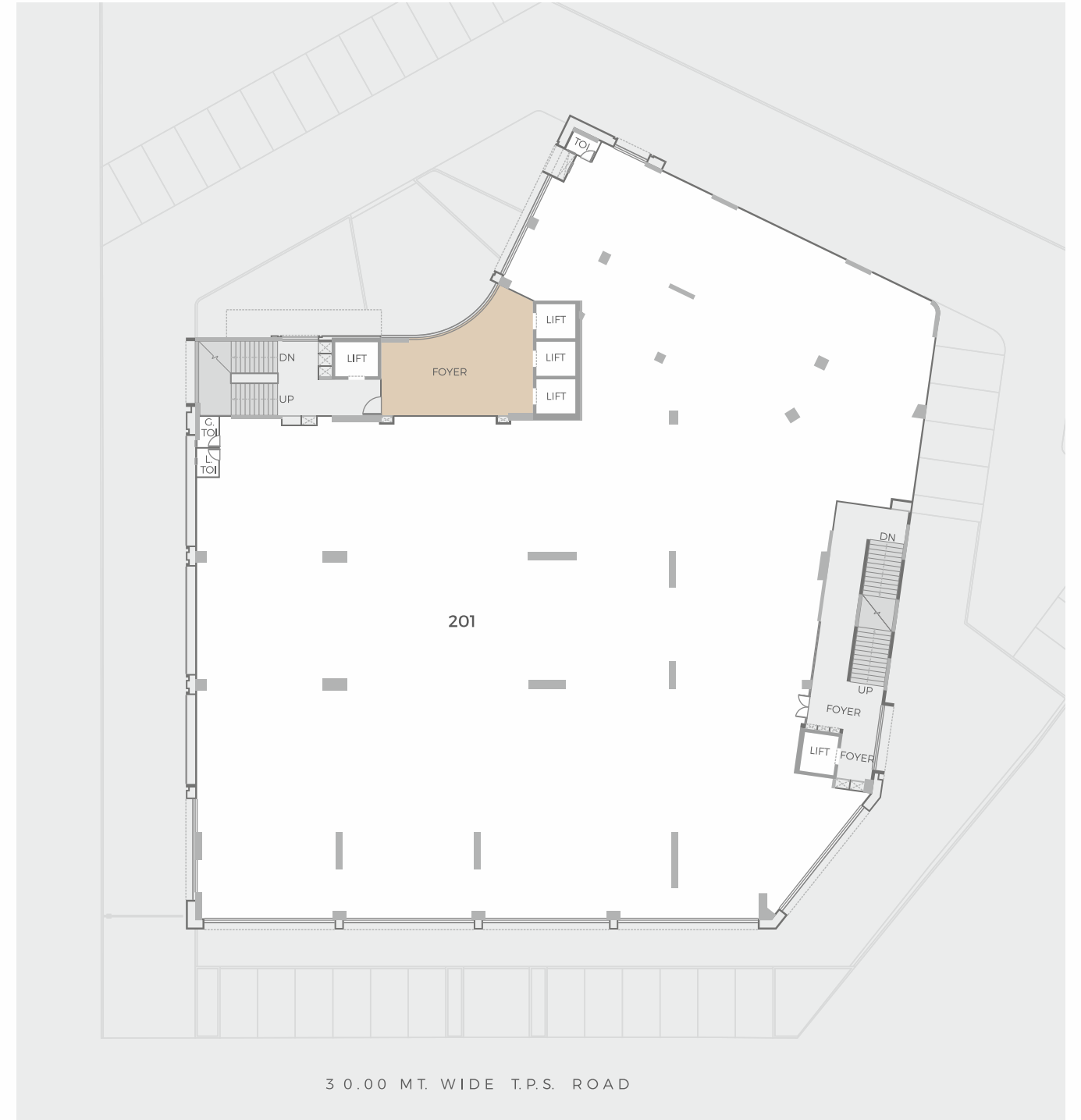
GROUND FLOOR PLAN



1st FLOOR PLAN



2nd & 3rd FLOOR PLAN



4th FLOOR PLAN



5th FLOOR PLAN

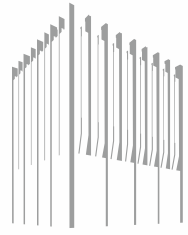


6th TO 12th FLOOR PLAN



13th FLOOR PLAN





SHILP-ZAVERI

SALIENT FEATURES

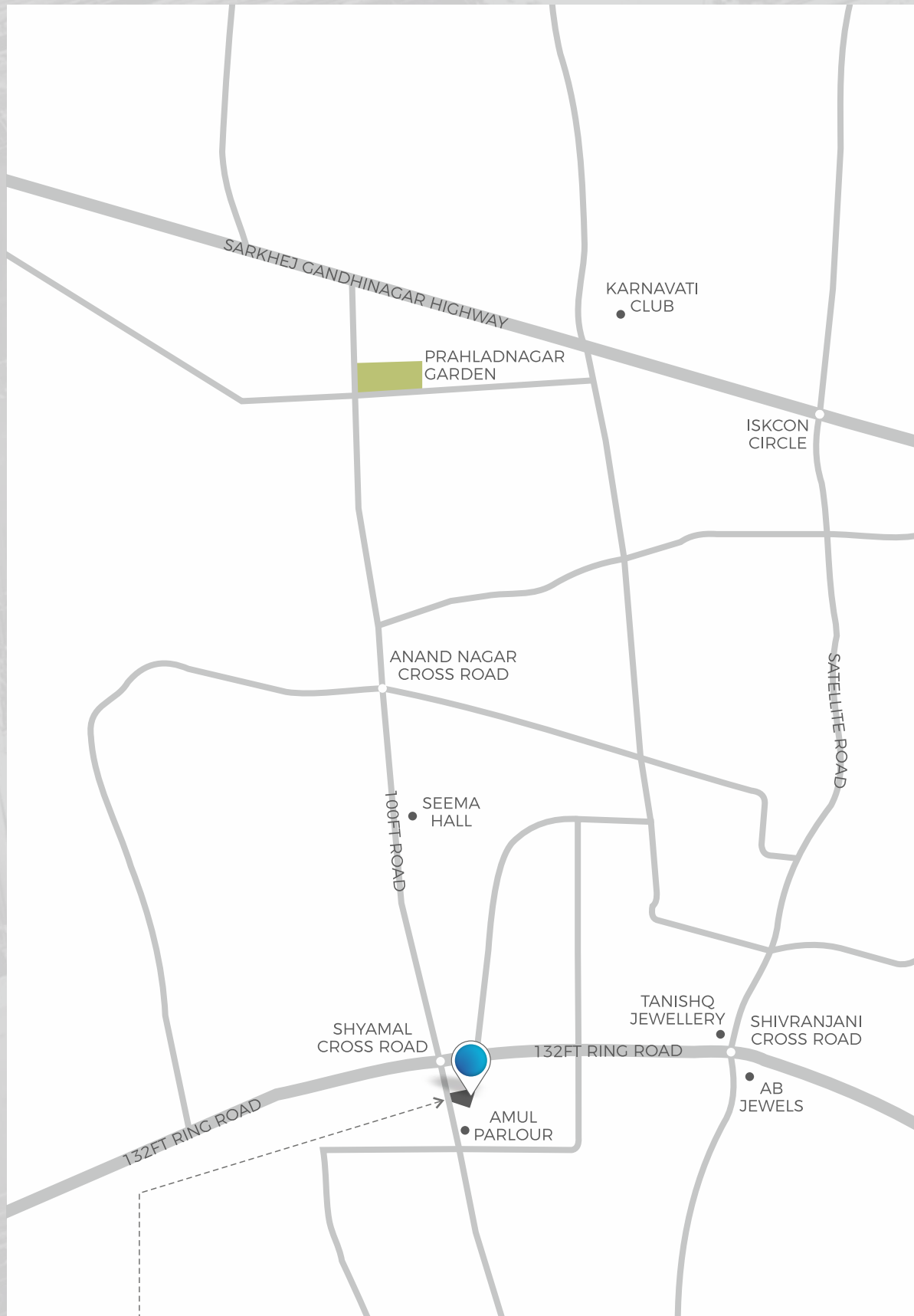
- 3 Basements for ample parking
- A state-of-the-art design with consideration of sunlight and other weather conditions
- Luminously built-with keeping in the mind the environmental standards
- 5 superiorly powered elevators
- Fire system for safety
- CCTV secured campus

SPECIFIC NOTES :

- All rights reserved by the developers for alteration / modification / improvement in specifications and changes in dimensions and planing shall be binding to all.
- All architectural and interior views in the brochure are computer graphics simulated interpretation of the actual project.
- The brochure is just for an easy presentation of the project and should not be treated as a legal document.
- Food items cannot be served in common places of the complex. Merchandise, furniture, garbage etc. cannot be store / kept in common areas.
- Member has no rights to changes in elevation and structure of building.
- Subject to Ahmedabad Jurisdiction only.
- Electricity charges, legal charges, AMC, any other facility shall be borne by purchaser.
- Stamp duty, registration and any taxes shall be borne by purchaser as actual.



KEY PLAN



ABOUT THE DEVELOPERS



Zaveri Realty, a subsidiary company of Zaveri & Co. Group, was established with the philosophy of excellence, innovation, and sustainability in the real estate industry. Our core business is development of residential, commercial, and retail properties in Ahmedabad, meticulously carving a niche for itself by combining the best of design and technology.

Enhancing lives in the most delightful manner, Zaveri Realty has brought a paradigm shift in the real estate industry, redefining living and delivering cutting-edge commercial solutions in Ahmedabad. We have successfully completed innumerable residential, commercial and retail development projects, with amazing architecture and world-class amenities.

Zaveri Realty stands out in itself by following transparent business practices, and bringing smiles to faces.



SHILP stands for Excellence & Integrity and is the result of passion, determination and hard work of a loyal and efficient team. SHILP has always sought to provide X-factor and uniqueness in all the projects that it undertakes.

Customer satisfaction, fulfilling commitments and building trustworthy relations with our Clients are our core values.

SHILP group has developed properties mainly in the Western Zone of Ahmedabad city i.e. in Science City, Sola, Thaltej, Bopal, Iskon Cross Roads, and Vastrapur etc.



SHILP-ZAVERI



ZAVERI REALTY

801/A, Parshwanath Esquare,
Corporate Road, Prahladnagar,
Ahmedabad - 380015.

Phone: +91 98795 77220, 079-4890 5222
Email: info@zaverirealty.com

www.zaverirealty.com

www.gujrera.gujarat.gov.in

RERA Registration No.: PR/GJ/AHMEDABAD/AHMEDABAD CITY/Others/CAA02695/180518



SHILP DEVELOPERS

204, Shilp-3, Opposite HOF Showroom,
Mann Party Plot Cross Road,
Sindhuhavan Road, S.G. Highway,
Bodakdev, Ahmedabad - 380052.

Phone: +91 70430 01234, 079-4005 6757
Email: sales@shilp.co.in

www.shilp.co.in